

EC Exam

Name each note.

A musical staff with a treble clef and a bass clef. The treble clef staff contains a series of notes: G4, A4, B4, C5, D5, E5, F5, G5, A5, B5, C6, D6, E6, F6, G6. The bass clef staff contains a series of notes: G2, F2, E2, D2, C2, B1, A1, G1, F1, E1, D1, C1, B0, A0, G0. Below the treble clef staff, there are 15 empty square boxes, each aligned with a note in the treble clef staff.

Fill in the missing bar lines.

Two musical staves. The first staff is in 4/4 time and contains the following notes: G4, A4, B4, C5, D5, E5, F5, G5, A5, B5, C6, D6, E6, F6, G6. The second staff is in 6/8 time and contains the following notes: G4, A4, B4, C5, D5, E5, F5, G5, A5, B5, C6, D6, E6, F6, G6.

Name each interval.

A musical staff with a treble clef and a bass clef. The treble clef staff contains a series of notes: G4, A4, B4, C5, D5, E5, F5, G5, A5, B5, C6, D6, E6, F6, G6. The bass clef staff contains a series of notes: G2, F2, E2, D2, C2, B1, A1, G1, F1, E1, D1, C1, B0, A0, G0. Below the treble clef staff, there are 7 empty square boxes, each aligned with an interval between notes in the treble clef staff.

Add **one** rest to each measure.

Two musical staves. The first staff is in 2/4 time and contains the following notes: G4, A4, B4, C5, D5, E5, F5, G5, A5, B5, C6, D6, E6, F6, G6. The second staff is in 3/4 time and contains the following notes: G4, A4, B4, C5, D5, E5, F5, G5, A5, B5, C6, D6, E6, F6, G6.

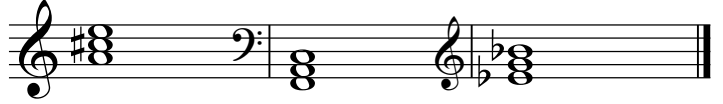
Write the top number for each time signature.

Two musical staves. The first staff is in 4/4 time and contains the following notes: G4, A4, B4, C5, D5, E5, F5, G5, A5, B5, C6, D6, E6, F6, G6. The second staff is in 8/8 time and contains the following notes: G4, A4, B4, C5, D5, E5, F5, G5, A5, B5, C6, D6, E6, F6, G6.

Name these major keys.

A musical staff with a treble clef and a bass clef. The treble clef staff contains the following notes: G4, A4, B4, C5, D5, E5, F5, G5, A5, B5, C6, D6, E6, F6, G6. The bass clef staff contains the following notes: G2, F2, E2, D2, C2, B1, A1, G1, F1, E1, D1, C1, B0, A0, G0.

Name these major chords.



Mark W for Whole step and H for Half step.



Match words with numbers near music signs.

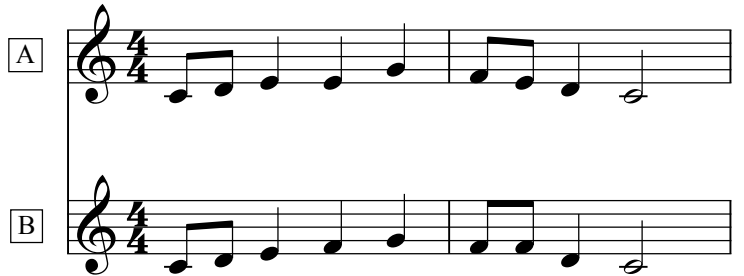


- | | | |
|----------------------|-----------------|----------------------|
| _____ Slur | _____ Accent | _____ Fermata |
| _____ Fortissimo | _____ Natural | _____ Key Signature |
| _____ Staccato | _____ Crescendo | _____ Triad |
| _____ Time Signature | _____ Tie | (Bonus) _____ G Clef |

Aural Exam

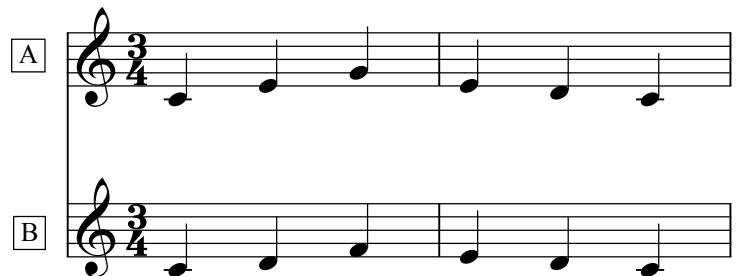
1. Identify the interval you hear:

- 2 3 5



2. Identify the interval you hear:

- 2 3 5



3. Are the two phrases the same?

- Yes No