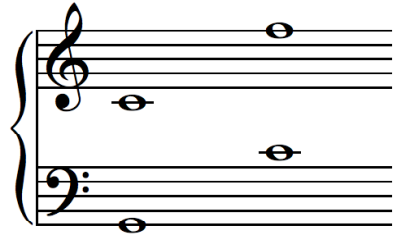


Note Naming

Piano:



Instrumental and Vocal:



Rhythm

(As counted in 4/4 time)

	▬	Whole note/rest	1	2	3	4				
	▬	Half note/rest								
	}	Quarter note/rest								
	7	Eighth note/rest	1	&	2	&	3	&	4	&

Note Values: Every note equals 2 of the next smaller note.

$$\circ = \text{♩} + \text{♩} \quad \text{♩} = \text{♪} + \text{♪} \quad \text{♪} = \text{♩} + \text{♩}$$

The Rule of the Dot: A dot adds $\frac{1}{2}$ the length of the note before.
A dotted note equals 3 of the next smaller note.

$$\begin{aligned} \circ. &= \circ + \text{♩} & \text{♩}. &= \text{♩} + \text{♪} & \text{♪}. &= \text{♪} + \text{♩} \\ \circ. &= \text{♩} + \text{♩} + \text{♩} & \text{♩}. &= \text{♪} + \text{♪} + \text{♪} & \text{♪}. &= \text{♩} + \text{♩} + \text{♩} \end{aligned}$$

Time Signatures (Meter)

Know these meters: $\frac{2}{4}$ $\frac{3}{4}$ $\frac{4}{4}$ $\frac{5}{4}$ $\frac{6}{4}$

The 4 on the bottom means a quarter note (♩). The top number tells how many (quarter notes) are in each measure.

○	or	—	= 4	♩		
		♩.	= 3	♩		
♩	or	—	or	♩. ♩	= 2	♩
		♩	or	♩	= 1	♩
♩♩	or	♩ ♩	or	♩ ♩	= 1	♩

A whole rest — can also fill any measure of any size.

Intervals

An interval is the distance between two notes. You can find the interval by counting the bottom note, every line and space between, and the top note.

2nd 3rd 4th 5th 6th

Line Space Line Space Line

Key Signatures

Know these key signatures: C, G, and F major.

<p>C Major</p>	<p>G Major</p>	<p>F Major</p>
----------------	----------------	----------------