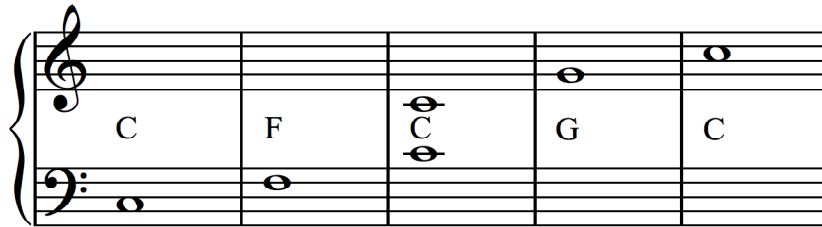


Note Naming

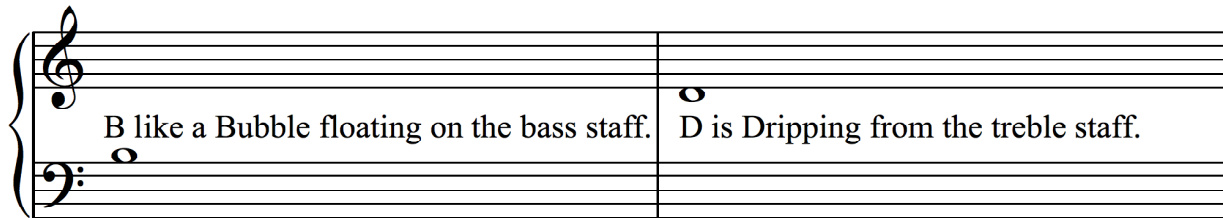
Range:



Know your landmarks!



Can you tell the difference between B and D?



Rhythm

Whole note/rest		
Half note/rest		
Quarter note/rest		
Eighth notes		

Note Values:

Every regular note equals
2 of the next smaller note.

$$\text{Whole note} = \text{Half note} + \text{Half note}$$

$$\text{Half note} = \text{Quarter note} + \text{Quarter note}$$

$$\text{Quarter note} = \text{Eighth note} + \text{Eighth note}$$

A dotted note equals
3 of the next smaller note.

$$\text{Dotted half note} = \text{Half note} + \text{Quarter note} + \text{Quarter note}$$













Time Signatures (Meter)

Know these meters:

2 3 4
4 4 4

The 4 on the bottom means a quarter note (♩).

The top number tells how many quarter notes are in each measure.

 = 4 
 = 3 
 or  = 2 
 or  = 1 
 = 1 

Intervals

An interval is the distance between two notes. You can find the interval by counting the bottom note, every line and space between, and the top note.

